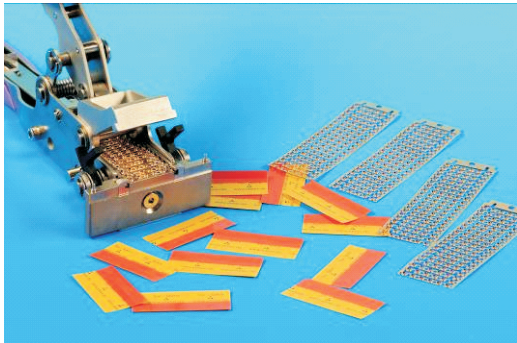




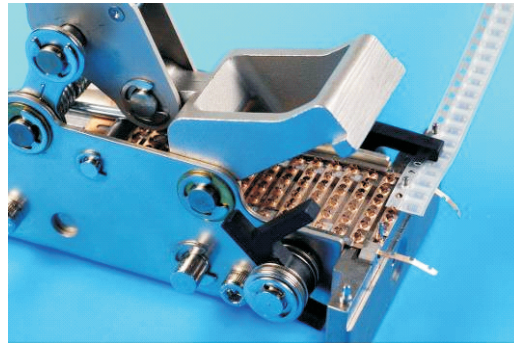
TOP-Splice and SMD Splice Shims for „Cartridge Shim Tool“

ESD Safe Tape Connectors for e.g. 8 mm SMD Tapes

- Patent applied for -



1.) TOP-Splice, SMD Cartridge Tool + Shim-Cartridges



2.) Shims and SMD Tape ends inserted in Tool and „riveted“ together



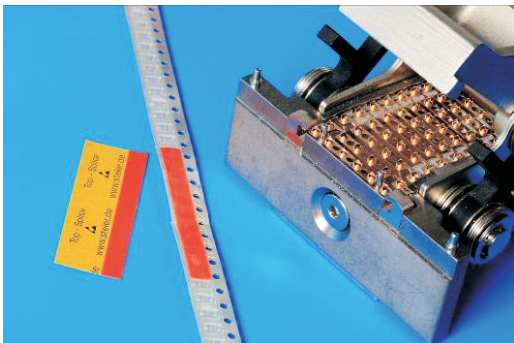
3.) remove narrow paper strip from back



4.) apply Top-Splice to the edge of the Cover Tape and firmly press together



5.) tear along the micro perforation to remove the „handle“



6.) Done!



TOP-Splice:

Order No: 3.8643.00
Size: 4,3 x 40 mm
Unit: 1,500 / Carton

Splice Shims for „Cartridge Shim Tool“:

3.2222.00
20 Shims per Cartridge
4,000 Shims (200 Cartridge)